

HIGHWAY PATCH 7000

Quick Set Highway Repair

MANUFACTURER:

Empire Blended Products, Inc.
250 Hickory Lane • Bayville, NJ 08721
(732) 269-4949 • Fax (732) 269-0497

PRODUCT DESCRIPTION:

HIGHWAY PATCH 7000 is a highly effective concrete patch that sets strong enough to support normal traffic 1 hour after set, thereby minimizing traffic congestion. It expands as it sets, which not only minimizes shrinkage cracks but provides a tight seal with existing pavement, thus preventing seepage to underlying structures.

USES:

- Repair highways, roads and bridges
- Repair parking lots, commercial concrete floors or any concrete surface

ADVANTAGES:

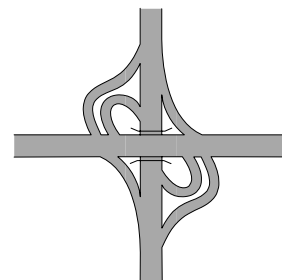
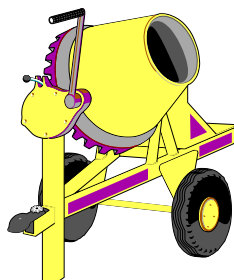
- Sets within 30 minutes
- Expands as it sets
- Resists water erosion
- High compressive strength
- Excellent freeze-thaw resistance

INSTALLATION:

Surface Preparation:

Mark off damaged areas and make a 2" vertical cut with a masonry saw or other suitable equipment around the perimeter of the damaged areas. Remove all debris within the cut area, as well as grease, dirt and loose or unsound concrete from areas to be patched. It is important to have all the damaged areas prepared before mixing the material, because

REPAIRING ROADS AND BRIDGES



the mixing, placement and finishing should be accomplished in a very short time. Wet the area to be patched with water, to prevent water from being drawn from *HIGHWAY PATCH 7000*. However, do not leave free-standing water in the cavity.

Mixing:

We recommend a ribbon type plaster mixer with rubber wipers. However, a standard drum type concrete mixer, or for small batches, a hand drill with a paint paddle can be used. Be certain that all mixing equipment and tools are clean before beginning. The total mix should be limited to a quantity that can be mixed and placed in 15 minutes. Measure water (approximately 2_ quarts per 50 pound bag of material) and add to mixer. With mixer operating, slowly add *HIGHWAY PATCH 7000*. Mix until lump-free, about 2-5 minutes. Dump batch and immediately deliver the mix to the prepared pavement area. Clean mixer by adding water and allowing mixer to run. Dump cleaning water before starting another batch.

Placement:

Level the *HIGHWAY PATCH 7000* mix to the surrounding pavement with an appropriate screeding device and before set, broom finish if necessary. If a smooth finish is desired, trowel lightly before set.

Curing:

Under normal conditions, *HIGHWAY PATCH 7000* is self-curing. Under hot, windy conditions, a curing membrane may be required to prevent surface dry out. Allow material to develop strength for at least 1 hour after set before allowing traffic to resume over patched area.

Coverage:

One 50 pound bag will yield 0.39 cubic feet.

Packaging:

Available in 50 pound multiwall paper bags with moisture barrier.

Color:

Light gray

TECHNICAL DATA:

Set Time	20-30 minutes
Wet Density	145 pcf
Setting Expansion.....	0.05%
Net Expansion After Drying	0.01%
Wet Compressive Strength	
1 Hour.....	1,600 psi
3 Hours.....	2,600 psi
1 Day	4,300 psi
7 Days	7,000 psi
Freeze-Thaw Resistance.....	Good

LIMITATIONS:

Use above grade only. *HIGHWAY PATCH 7000* is not recommended for structural repairs. Do not apply to frozen surfaces or if temperature will fall below 40°F within 24 hours.

CAUTION:

Contains Portland Cement CAS #65997-15-1. Freshly mixed cement products may cause skin injury. Avoid contact with skin where possible and wash exposed areas promptly with water. If any product gets into the eye, rinse immediately and repeatedly with water. If ingested, **do not** induce vomiting and get prompt medical attention. Also contains Sand CAS #14808-60-7. Avoid breathing dust. Prolonged exposure to dust may cause delayed lung injury (silicosis) or cancer IARC Class 2A. Wear NIOSH approved mask for silica dust. **Keep Out Of Reach Of Children.**

WARRANTY:

Due to the use of this product beyond our control, we assume no liability for damages of any kind, and the user accepts the product "as is" and without warranties, expressed or implied, from either Empire Blended Products or its agents. The suitability of the product for an intended use shall be solely up to the user. Our only obligation shall be to replace or pay for any material proved defective, with our liability limited to the purchase price of materials supplied by us.